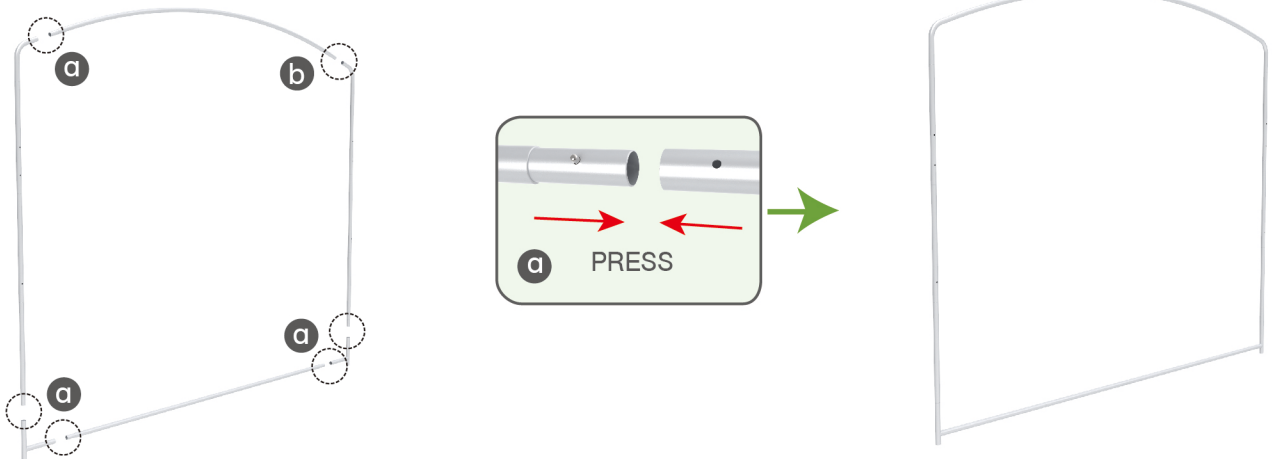


PARTS

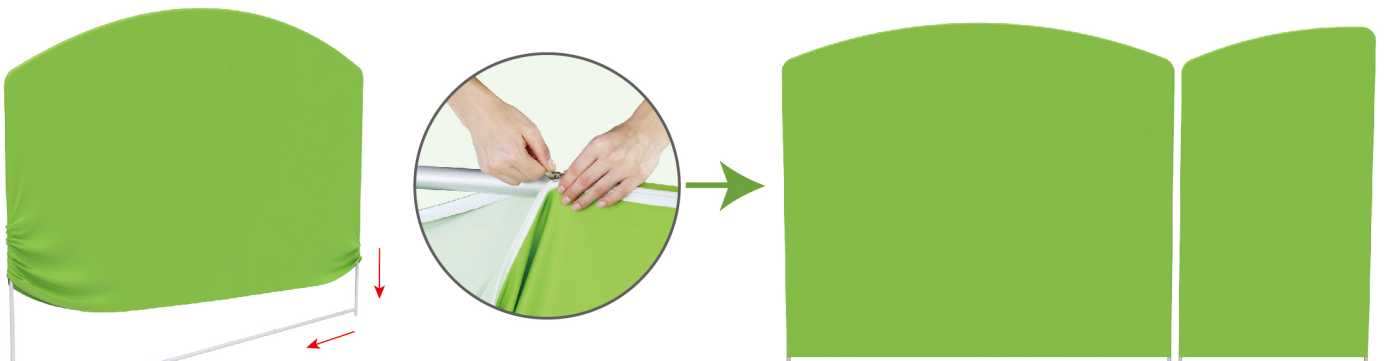
STEP 02

To connect long poles by corner pieces according to the labellings



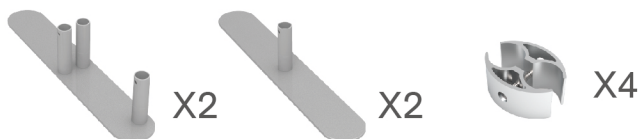
STEP 03

To slide the fabric banner on the frame from top and zip up at bottom

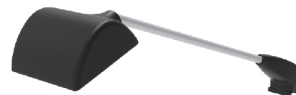


Same steps for below style of headers

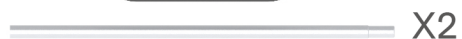
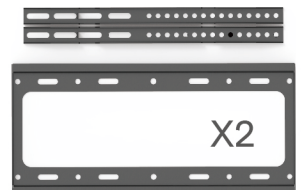
Booth Set Assembly



LED Light



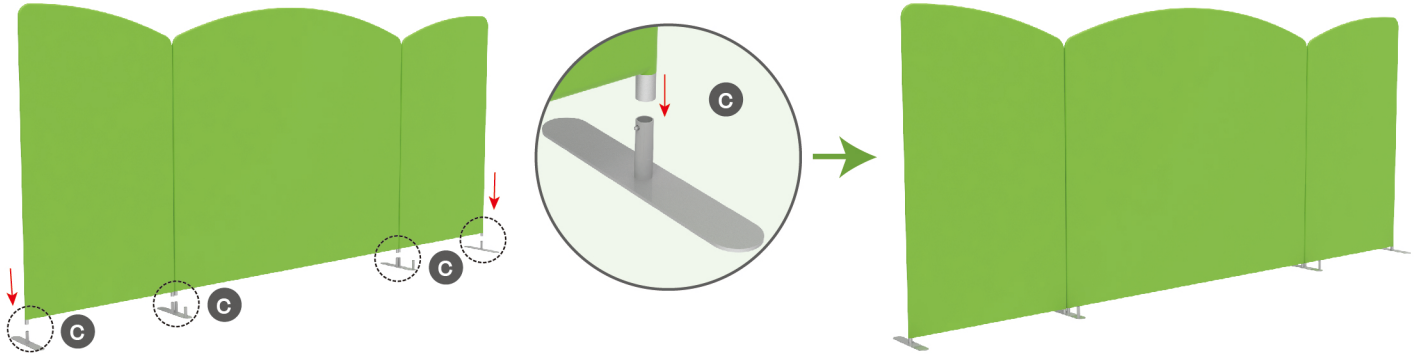
Light Clips



PARTS

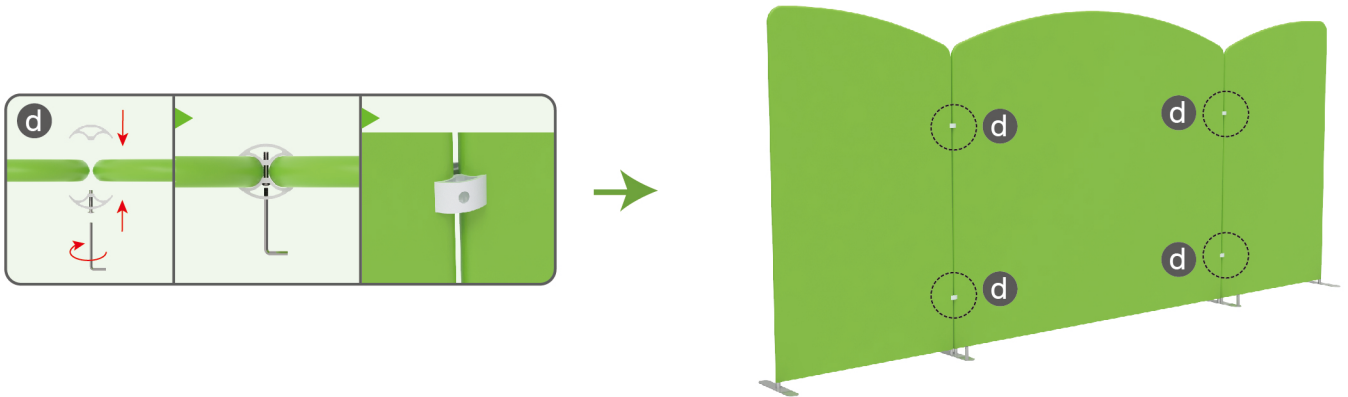
STEP 01

To install the "double-head" feet in position to make backwalls stand together



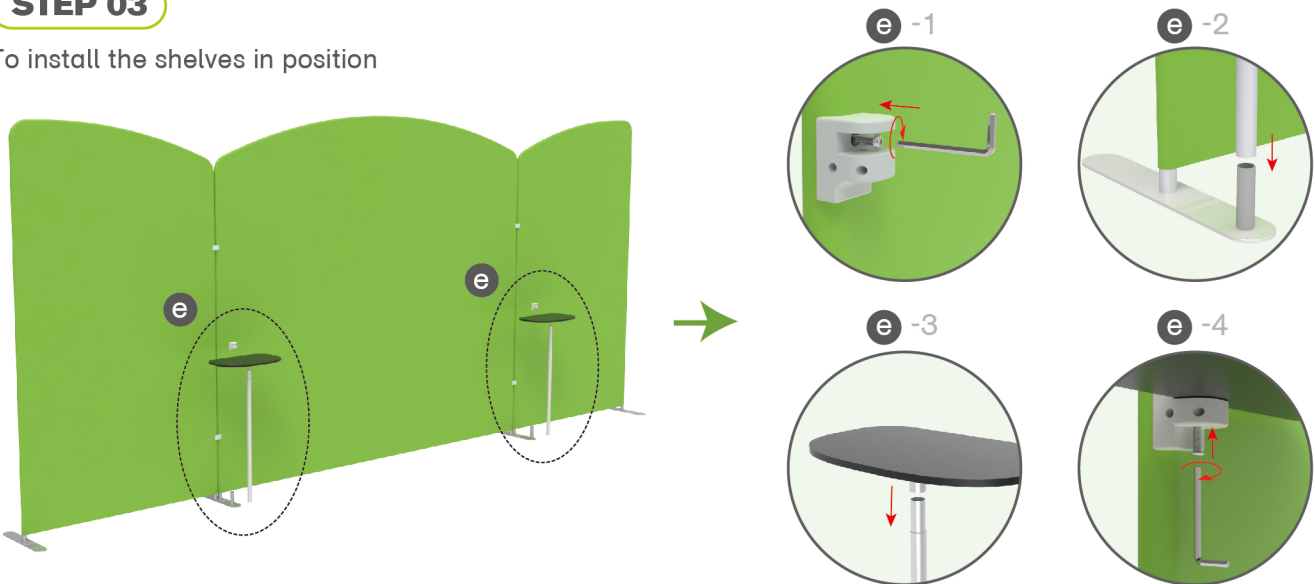
STEP 02

To put the C clip into the gap between backwalls and fasten by screws



STEP 03

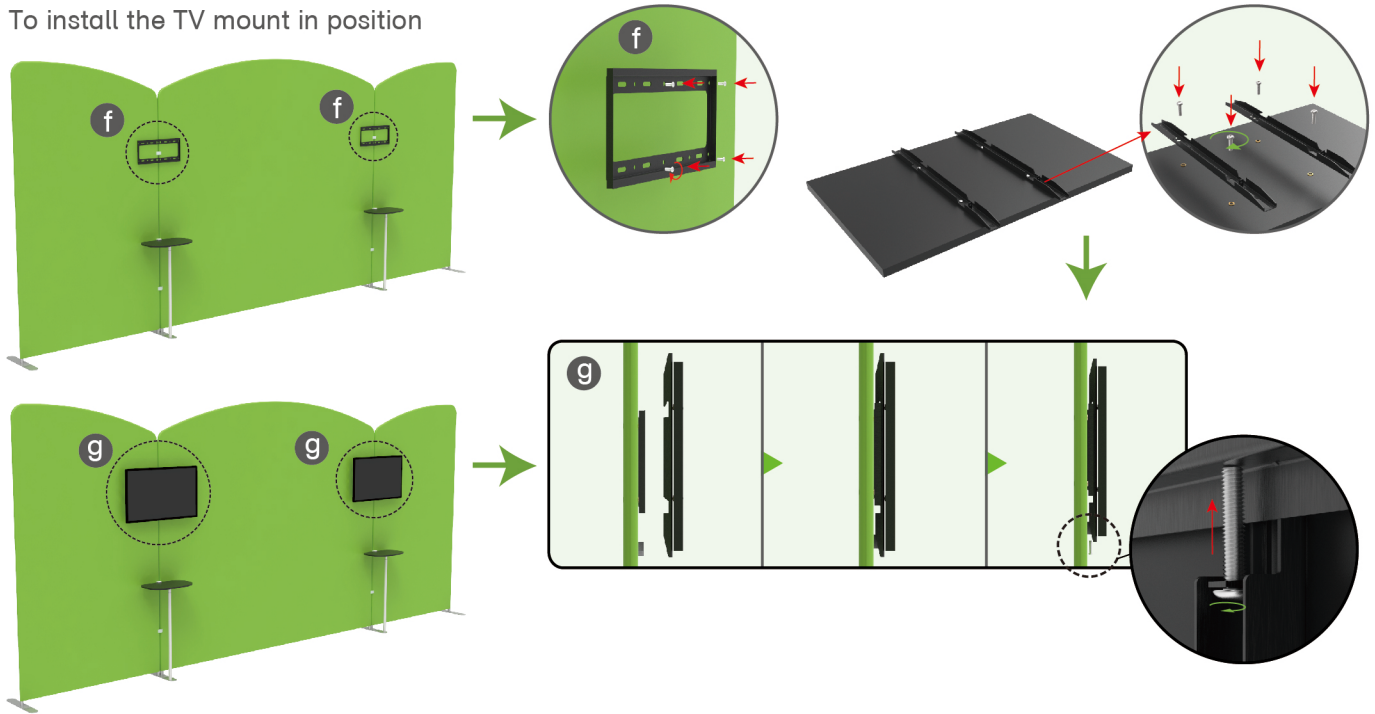
To install the shelves in position



PARTS

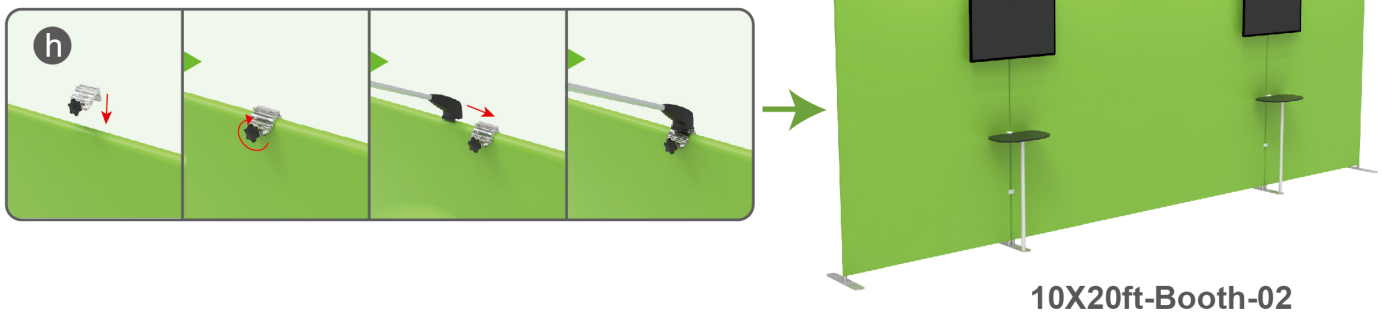
STEP 04

To install the TV mount in position



STEP 05

Install LED light



10X20ft-Booth-02

SAME STEPS FOR 10X20ft-Booth-03



10X20ft-Booth-03